

Specification

22.07.2020

Code No. 10020

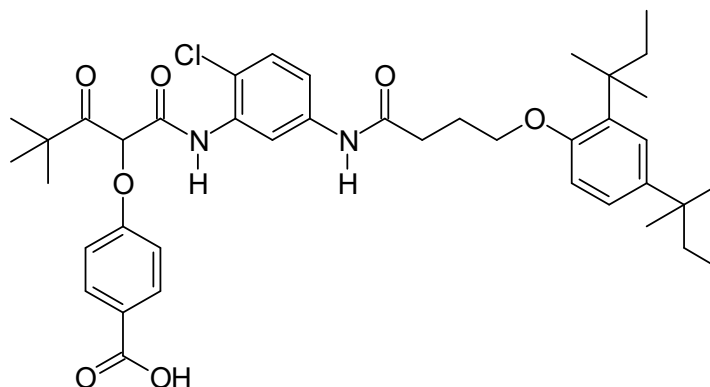
FK 2

CAS No. 53918-53-9

EEC No. 258-863-6

Chemical Name N-{2-Chloro-5-[4-(2,4-di-tert-pentylphenoxy)butyramido]phenyl}-
2-(4-carboxyphenoxy)pivaloylacetamide

Structure

Molecular Formula $C_{40}H_{51}ClN_2O_7$

Molecular Weight 707.31

Product Properties

Appearance	Yellowish to beige crystalline powder
Assay (%)	≥ 97.0 (TBAH)
Solubility (10% Ethylacetate)	clear, no residue
Loss on drying (%)	≤ 1.0
Sulfated ash (%)	≤ 0.3

Storage T < 30°C, max. 70% rel. humidity, tightly closed

Application Yellow coupler in photography